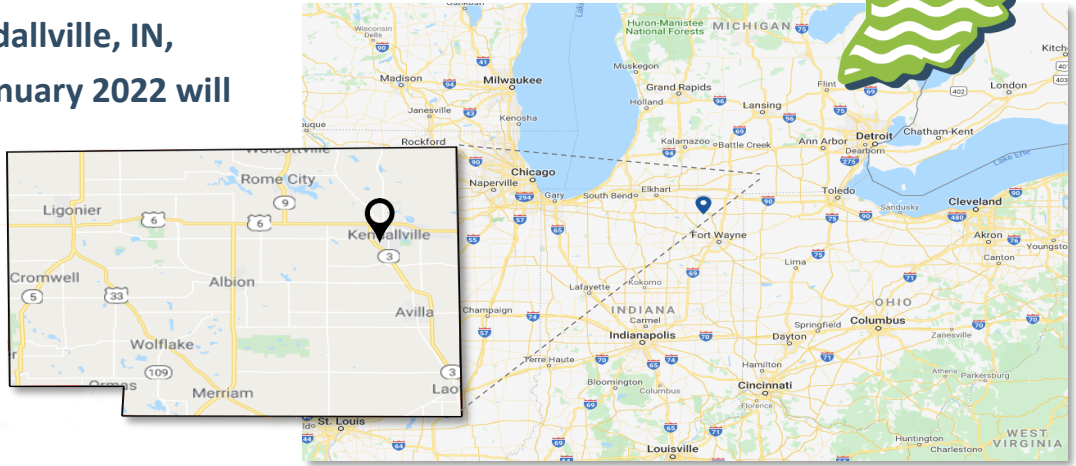


AVAILABLE JANUARY 2022

# 75,000 SQ FT SHELL BUILDING

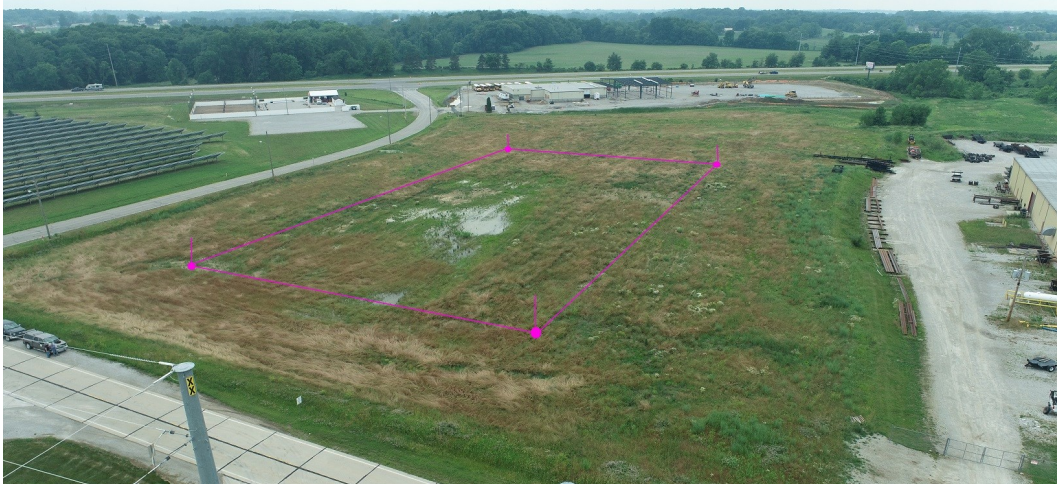


**NEW SHELL BUILDING** in Kendallville, IN,  
targeted for completion in January 2022 will  
offer 75,000 square feet  
(expandable to 100,000  
square feet) steel widespan  
structure on 8.47 acres,  
zoned Light Industrial.



## Build to suit!

More info at <https://bit.ly/3j92Eno>



**Dimensions: 375'x200' (EXPANDABLE)**

**Widespan steel construction**

**30' ceiling**

**Limestone drive**

**Pond and outfall structures**

**Manhole structures**

**Storm sewer piping**

**Standing seam metal roof**

**26 gauge steel siding (grey/black)**

**(5) overhead door openings**

**(8) walk-in doors**

**6" reinforced concrete floor**

**3-Phase electric**

**Interior & exterior LED lighting**

**Daylight ceiling strips**

**Thermo cyclor air rotation units**

**Fire suppression sprinkler system**

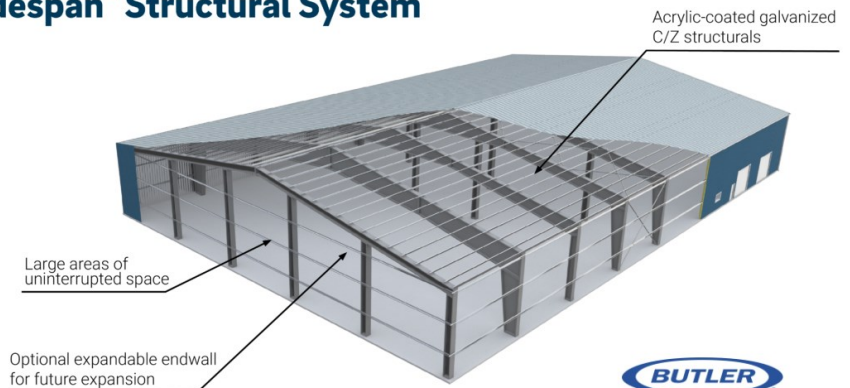
**Noble County Shell Building LLC**

**General Contractor:**



**LEATHERMAN  
CONSTRUCTION**  
DESIGN-BUILD | SINCE 1969

## Widespan™ Structural System



**Noble County Economic Development Corp.**  
110 South Orange Street  
Albion, IN 46701

**Phone: (260) 636-3800**  
**Email: [info@noblecountyedc.com](mailto:info@noblecountyedc.com)**  
**Web: [www.noblecountyedc.com](http://www.noblecountyedc.com)**